



Saturday 27th September 2025

81st

Yeovil Ploughing Match



WINDMILL AGRI

HOME REARED MEAT FOR SALE



ORDER THROUGH WEBSITE

Visit www.WindmillAgri.co.uk for latest stock, choose a delivery method Ship (free delivery to your door, for residents of Montacute, Yeovil and surrounding villages) or Pick Up from Windmill Farm, Montacute TA15 6UT and a payment option Cash on Delivery, Credit Card or PayPal.

See Website for Online Discounts and offers

Delivery will be arranged for a mutually convenient time, usually 6-7pm, To arrange pick up, text or phone 07880 518416 - Meat Store open by appointment.

**Proud to be supplying
Burgers, Sausages and Bacon to
Yeovil Ploughing Match**



YEOVIL PLOUGHING SOCIETY

(Affiliated to The Society of Ploughmen Ltd and
The Somerset Ploughing Championship Association)

EIGHTY-FIRST PLOUGHING MATCH AND CROP COMPETITION

To be held on a site at
ASHINGTON, NEAR YEOVIL
(by kind permission of Mike Tizzard)

SATURDAY 27TH SEPTEMBER 2025

**All entry forms to be received by
Mrs Corinne Rayment
Hon Secretary**

**not later than Friday 19th September 2025
(see page 17 for entry form)**

Telephone: 07807 669071
Email: yeovilplough@outlook.com

Have a look at our new Website at ypms.uk

OFFICERS

President:	Brian Hook
Chairman:	Fred Anthony
Vice Chairman	Kenny Gee
Secretary:	Corinne Raymont
Assistant Secretary:	Steve Raymont
Treasurer:	Chris Baker
Chief Stewards:	Stan Turner and James Jones
Judges' Steward:	Robert Dimond
Schedule Secretary:	Corinne Raymont
Crop Competition	Yeovil Young Farmers

JUDGES

Ploughing:	Anthony Butler	David Lowe
	Mike Dennett	Simon Mills
	Michael Fooks	Graham Stevens
	Ashley Gale	Alan Welsh
Turnout:		John Baker
Crop Competition:		Clive Bethell

NEXT YEAR'S YEOVIL PLOUGHING MATCH
WILL BE HELD ON SATURDAY 26TH SEPTEMBER 2026

Refreshments and drinks will be available all day



A free lunch and a drink for Ploughmen will be delivered to your plot

Draw tickets available from the Refreshment Tent

A MESSAGE FROM THE CHAIRMAN

Hi everybody

We're back again this year after having to cancel last year's match due to the atrocious weather. Having a current phone number for all competitors would greatly help with contact at short notice.

We're excited to announce that our match will be held at Mike Tizzard's farm in Ashington, near Ilchester. A big thank you to Mike for generously allowing us to use his land.

Without our kind site donors, we wouldn't be able to hold our match. If anyone can host our match in the future, please let us know, as finding sites is becoming more challenging due to new farming methods.

Could all ploughmen please collect their plot number from the Secretary's area on arrival and ensure it is visible on their tractor to help with judging. Please place your plot number on your completed start to prevent loss and aid the judges when marking.

We are sad to announce that Donald Bartlett, our friend, previous Chairman and President, passed away on 28th September last year, the day our match should have been held. He was very supportive of our match and, over the years, did much to help our Society and we have had many matches on his land at Hinton Farm, Mudford. He will be sadly missed.



Vincent and Bery Baker, who have served as our secretary and assistant for over 50 years, have decided to step down as the lead organisers of our match. However, they will still be involved on the day. A big thank you to both of them. Similarly, Roy French, our treasurer, again for over 50 years, has decided to retire from this position. You will still see Roy and Eileen managing the judges' and ploughmen's lunches on the day. Thank you, Roy, for keeping an eye on our finances and for organising the prize money on the day.

After such a dry spring and early summer, who knows what the weather will be like for our match in September. Let's hope it will be better than last year. If you paid to enter last year's match, your entry will be free this year. We have a list of those who don't need to pay.

Wishing everyone a great day and let's keep our fingers crossed for some good weather!

Fred Anthony, Chairman - Mobile No: 07768 377612

SCHEDULE OF EVENTS

Competitors – please read the rules carefully

Only one entry to be made in any one Class in the Schedule

Entry Fee for all Classes - **£10**

Class 1 OPEN YOUNG FARMERS CONVENTIONAL

Open to members of any Young Farmers' Club

2 or more furrows

Prizes: 1st £40; 2nd £30; 3rd £20

Please show your membership card when collecting your plot number

Prize money sponsored by Hawkins Agri

Class 2 NOVICE

Open to anyone who has not won **more than one** First Prize in any Ploughing Match

2 or more furrows, minimum furrow width 10"

Prizes: 1st Rosewell Challenge Trophy and £40; 2nd £30, 3rd £20

Prize money sponsored by Graham Holland

Class 3 OPEN COMMERCIAL

3 or more furrows; minimum furrow width 12"

Prizes: 1st Raymont Agric Services Challenge Cup and £40; 2nd £30; 3rd £20

Prize money sponsored by Pitcher & Associates

Class 4 OPEN REVERSIBLE—THREE OR MORE FURROWS

Plough as rules on pages 10 and 11 and diagram on page 8

Minimum furrow width 12"

Prizes: 1st Nick Eagar Challenge Cup and £40; 2nd £30; 3rd £20

Prize money sponsored by Redlynch Tractors

Class 5 OPEN HIGH CUT

No restrictions; 2 or more furrows

Prizes: 1st Dave Bonning Memorial Trophy and £40; 2nd £30; 3rd £20

Prize money sponsored by Francis Bugler Ltd

Class 6 OPEN SEMI-DIGGER

2 or more furrows; minimum furrow width 12"

Prizes: 1st East Stoke Farm 50 Years Trophy and £40; 2nd £30; 3rd £20

Prize money sponsored by Steve Parker Services

Class 7 OPEN VINTAGE TRACTOR & TRAILER PLOUGH

2 or more furrows

Tractor and trailer plough to be pre-31 December 1959

Prizes: 1st Gordon Holland Shield and £40; 2nd £30; 3rd £20

Prize money sponsored by James Hodder

Class 8 OPEN VINTAGE TRACTOR & MOUNTED PLOUGH

2 or more furrows

Tractor and mounted plough to be pre-31 December 1959

Prizes: 1st Cliff Raymont Memorial Cup and £40; 2nd £30; 3rd £20

Prize money sponsored by Evans & Pearce

Class 9 OPEN CLASSIC TRACTOR & PLOUGH

2 or more furrows

Tractor must have been produced without a Q-Cab (approx 1976) and Plough to be pre-1976

Prizes: 1st Evan Wilson Challenge Cup and £40; 2nd £30; 3rd £20

Prize money sponsored by Pearce Seeds

Class 10 OPEN CLASSIC MASSEY FERGUSON TRACTOR & PLOUGH

2 or more furrows

Massey Ferguson tractor must have been produced without a Q-Cab (approx 1976) and any make plough to be pre-1976

Prizes: 1st Barclays Bank Challenge Cup and £40; 2nd £30; 3rd £20

Prize money sponsored by C&O Tractors

Class 11 OPEN CLASSIC REVERSIBLE

Plough as rules on pages 10 and 11

Minimum furrow width 12"

Prizes: 1st £40; 2nd £30; 3rd £20

Prize money sponsored by Bill Jolliffe and Fred Anthony

Class 12 OPEN FERGUSON T20 VINTAGE TRACTOR & PLOUGH

2 or more furrows

Tractor and plough to be pre-31 December 1956 as per Society of Ploughmen rules

Prizes: 1st Pete Batstone Memorial Cup and £40; 2nd £30; 3rd £20

Prize money sponsored by Mark Batstone and Dave Fox

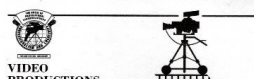
Class 13 HORSE PLOUGHING

There will be teams of horses ploughing at the match

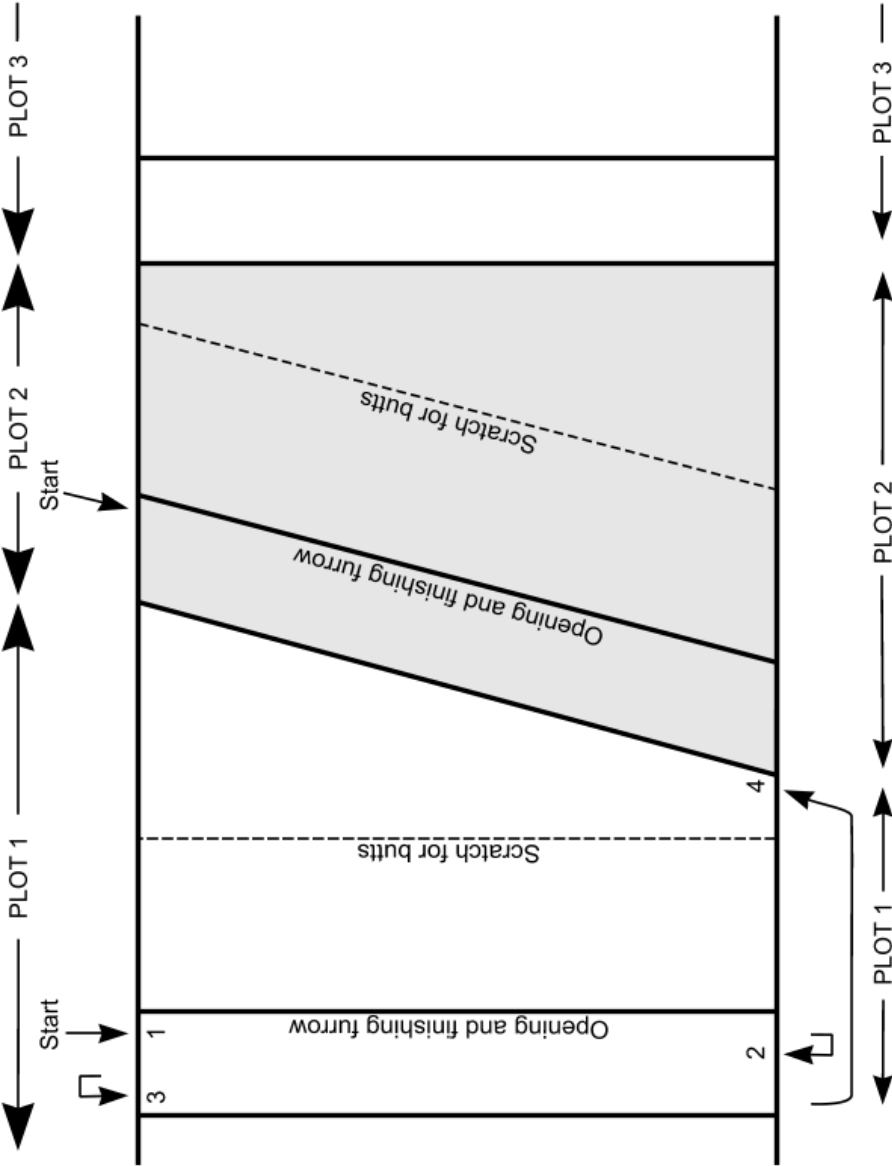


Watch out for Julian Bishop from Video-Trax who records our match.

Tel: 0127 429757 or 07889 142856



SYSTEM FOR REVERSIBLE PLOUGHING (CLASS 4)



JUDGES' METHOD OF SCORING

CONVENTIONAL PLOUGHS	Maximum points
Opening	
Well cut, uniform and straight (not applicable to High Cut)	20
Start (11 or 12 Furrows)	
Uniform and level	20
Seed Bed	
Weed control and soil made available	20
Firmness	
Firm, well packed furrows; no holes	20
Uniformity	
Clearly defined uniform furrows; no pairing	20
Finish	
Uniform and shallow	20
Ins and Outs	
Neat, accurate and regular	20
Straightness	
Straightness of the whole plot	20
General Appearance	
Workmanship and general appearance of the whole plot	20
 REVERSIBLE PLOUGHS	
Opening	
Well cut, uniform and straight	20
Start	
Uniform and level	20
Seed Bed	
Weed control and soil made available	20
Firmness	
Firm, well packed furrows; no holes	20
Uniformity	
Clearly defined uniform furrows; no pairing	20
Joining Furrow and Butts	
Neat, accurate with no dips or mounds	20
Finish	
Uniform and shallow	20
Accuracy of Final Furrow	
Close to 1 st furrow with no unploughed or reploughed land	20
Ins and Outs	
Neat, accurate and regular	20
Straightness	
Straightness of the whole plot	20
General Appearance	
Workmanship and general appearance of the whole plot	20

RULES FOR PLOUGHING

Competitors – please read the rules carefully

Ploughs

- a) Tractor ploughs to be fitted with skimmers (except High Cut, Vintage and Classic).
- b) Tailpieces are allowed.
- c) Plough bodies must always be in a “ploughing” position.
- d) All plough bodies must be used when finishing.

Time Allowed for all Classes except Classes Reversible and High Cut

- a) All competitors must be in the field by 9.30 am.
- b) Ploughing to start from 9.30 am but no later than 10.00 am. All splits to be finished by 10.20 am for judging.
- c) **Ploughing to be finished by 2.00 pm.**

Time Allowed for Reversible Classes

- a) Ploughing to start at 10.00 am and opening to be finished by 10.30 am.
- b) **Ploughing to be finished by 2.00 pm.**

Time Allowed for High Cut Class

- a) Ploughing to start from 9.30 am but no later than 10.00 am.
- b) **Ploughing to be finished by 2.30 pm.**

Opening

- a) Conventional ploughing - no land shall be left unturned.
- b) Reversible ploughing - single furrow opening with right-hand bodies.
- c) High cut - there is no opening.

Start

- a) Conventional ploughing - start to consist of 3 rounds, i.e., 11 or 12 furrows for 2 furrow ploughs, 17 or 18 furrows for 3 furrow ploughs, etc.
- b) Reversible ploughing - start to consist of 3 complete runs.
- c) Competitors to cast towards the next highest numbered plot.

Finish

- a) Conventional ploughing - finish to consist of last 8, 9 or 10 furrows.
- b) Last furrow to be ploughed towards competitor's own start.
- c) Rev ploughing - finish to consist of last 18 furrows for 3 furrow ploughs, 20 furrows for 4 or 5 furrow ploughs, 24 furrows for 6 furrow ploughs.

Depth

- a) All Classes to reach a depth of between 5" to 7" on completion of start and adhered to until commencing the finish.

Ploughmen Aged 13—16 Years of Age

- a) Ploughmen should be over 13 years of age on the day of the match.
- b) An adult must drive tractor to and from plot.
- c) Ploughmen to be supervised by an adult whilst ploughing but supervisor should not enter the plot after removal of siting poles.

Reversible Ploughing

- a) The ploughman should make a scratch for his last 18, 20 or 24 furrows whilst openings are being judged.
- b) After opening has been judged, the ploughman proceeds to:
 - plough 3 complete runs towards the lower numbered plot
 - start at the next highest number and complete his “butts”
 - complete the last 18, 20 or 24 furrows (see Finish paragraph on previous page)
- c) Alternate bodies to be used at all times. Each run to be completed before the plough is turned over.
- d) Use of siting poles not allowed after opening and scratch.

Classic Reversible Ploughing

- a) Opening - Single furrow made with the rear right-hand body, cast towards the next lower numbered plot.
- b) Start - The start comprises 8 or 9 furrows ploughed towards the neighbouring lower numbered plot.
- c) Finish - The finish consists of the last 11 or 12 furrows.

High Cut Ploughing

- a) Boats, presses and other attachments may be used in high cut ploughing only.
- b) Scratches may be handled but not removed in high cut ploughing only.

Vintage and Classic Ploughing

- a) Plough bodies must be made for the plough at the time of manufacture.
- b) Skimmers and tailpieces optional.
- c) Collapsible top links allowed.
- d) Hydraulic top links and other hydraulic rams are not allowed.

General

- a) The first and second runs next to the neighbour's plot will be allowed as straightening furrows and will not be judged.
- b) Rolling not allowed.
- c) Twin tractor wheels not allowed.
- d) Three siting poles only - assistance to set and remove is allowed.
- e) **Handling, treading or shaping of scratches or furrows is not allowed (except for High Cut).**
- f) Only one wheel mark allowed at the finish in tractor ploughing.
- g) No chains except for High Cut Class.
- h) The use of global positioning technology or other electronic measuring devices is not allowed.

Final Decision

- a) Any questions arising and not provided for in these rules shall be decided by the Committee, whose decision shall be final and binding.

Prizes

In the event of 3 or less entries, prizes will be awarded at judges' discretion.

SPECIAL PRIZES

- Championship “Pete” Hodder Perpetual Memorial Trophy
- Somerton Cup for the best work done by a Yeovil Young Farmers’ Club member.
- Trophy for the best work done by a Yeovil Young Farmers’ Club member under 18 years of age.
- Yeovil Agricultural Show Society Stevens Memorial Trophy for the best work done in Classes 1 to 4.
- Special prize donated by Kverneland for the best work done with a Kverneland plough.
- Special Prize of 20 litres of oil for the best turned-out tractor and plough in Classes 1-6, kindly donated by Ford Fuel Oils.
- Dare Memorial Bowl given by Mr J M Dare for the best turned-out tractor and plough which has completed its ploughing to the satisfaction of the judges in Classes 7-12.
- Fourth Prize of £15 will be awarded in each Class with seven or more entries.
- Fifth Prize of £10 will be awarded in each Class with twelve or more entries

INSURANCE, LIABILITY AND HEALTH & SAFETY

- ✦ The Yeovil Ploughing Society will not accept liability for any injury, loss or damage that may be sustained by any competitor, spectator, livestock, machinery or equipment connected with the competition or otherwise.
- ✦ All equipment will be left at owner’s risk.
- ✦ All tractors must have public liability insurance. Competitors must inform their own insurers that they are taking part.
- ✦ No passengers allowed on tractor whilst on site.
- ✦ **A copy of the Health and Safety Policy can be found in the Secretary’s office.**

THANK YOUS

We would like to say thank you to the sponsors of our ploughing classes, our advertisers and those who have made donations to support our Society.

Sponsors of Classes:

Class 1	Hawkins Agri
Class 2	Graham Holland Ltd
Class 3	Pitcher & Associates
Class 4	Redlynch Tractors
Class 5	Francis Bugler Limited
Class 6	Steve Parker Services Ltd
Class 7	James Hodder
Class 8	Evans & Pearce
Class 9	Pearce Seeds
Class 10	C&O Tractors
Class 11	Bill Jolliffe and Fred Anthony
Class 12	Mark Batstone and Dave Fox

Sponsors of Horse Ploughing

Ken Crang, Martin Dare, Paul & Rita Hurt

Donations received from:

Mr Vincent Baker	Mr Pete Ogborne	Mr Stan Turner
Mrs Sue Bonning	Raymont Agric	Mr Malcolm White
Mr Brian Hook	Mr Clive Snell	
South Somerset Agricultural Preservation Club		

If you would like to support us by advertising in our schedule next year, or by sponsoring a class, please speak to one of the Committee members or call Corinne on 07807 669071

The Committee would like thank Nigel Moysey Ltd for preparing the accounts each year.



Purple Hire Solutions kindly provide the loan of toilets for our match. Thank you.



Our thanks go to Eagle Plant for supplying the Secretaries' Office. Thank you.



CROP COMPETITION – OPEN TO ALL

Entries to be received by 10.30 am on the day, PROMPT
PLEASE LABEL ALL ENTRIES

Classes



1	Fodder Beet	3 with tops
2	Maize	3 stalks
3	Kale	3 stalks
4	Silage (Clamp)	10lb
5	Silage (Bag)	10lb
6	Silage (Whole crop)	10lb
7	Hay	1 net
8	Barley Straw	1 net
9	Oat Straw	1 net
10	Wheat Straw	1 net
11	Oats	7lb
12	Wheat	7lb
13	Barley	7lb
14	Peas	7lb
15	Beans	7lb
16	Potatoes (White)	5 equal + 1 large
17	Potatoes (Coloured)	5 equal + 1 large
18	Maize Cobs	3 as a group
19	Maize Cob	Single (judged by weight)
20	Ley Turf	18" x 12"
21	Open (any crop not in Classes 1-20)	3 off complete/net off/7lb off
22	Best hand drawn picture of a tractor	Open to children under 12

£1 entry per class, £5 for 5 or more entries.
Only one entry per class per person.

Prizes: First: £5 Second: £4 Third: £2

The "Pearce Seed Challenge Trophy" will be awarded to the competitor with the most points gained in the competition.

Competition Rules: Judge's decision is final. All produce left at owner's risk.

SOMERSET PLOUGHING CHAMPIONSHIP ASSOCIATION 2025 MATCHES — MAY BE SUBJECT TO CHANGE

- NORTH SOMERSET** Lower Stock Farm, Wrington, BS40 5HT
Sunday 7 September
For details contact Tim Ledbury on 01934 837283 or by email at tim@nsas.org.uk
- BRIDGWATER** Chedzoy, Bridgwater
Saturday 20 September
For details contact John Dyer on 07798 787029
- FROME** Laverton, BA2 7QX
Tuesday 23rd September
For details contact Zoe Welch on 07435 316175 or by email at fromeploughingassociation@outlook.com
- MENDIP** On land adjoining Franklyns Farm, BA3 4SQ
Wednesday 24 September
National Vintage Area Finals
For details contact Judith Ogborne on 07783 709619 or by email at judith.mps@btinternet.com
- YEOVIL** Ashington, Yeovil
Saturday 27 September
For details contact Corinne Rayment on 07807 669071 or by email at yeovilplough@outlook.com

OTHER MATCHES/EVENTS

- SIDMOUTH JUNCTION** Blue Ball Cross, Colestocks, Devon
Sunday 14 September
For details contact Lucy Gould on 07702 871435 or by email at sjploughing@gmail.com
- MELPLASH AGRICULTURAL Society** Off the A356, Toller Fratrum, Dorset, DT2 0EL
Sunday 28 September
For details contact Lucy Hart 01308 423337 or by email at lucy@melplashshow.co.uk

74TH BRITISH NATIONAL PLOUGHING CHAMPIONSHIPS & COUNTRY FESTIVAL
11th & 12th October 2025

Near Allesley, Coventry, West Midlands, CV5 9DH

By kind permission of the Brandreth Family and
the Sir Thomas White Trust

For more information, visit www.ploughmen.co.uk



DATA PROTECTION

Yeovil Ploughing Society respects your privacy and will only use your information to provide you with information on the Society and its events.

Your Personal Data is stored electronically and/or paper and it will not be shared with third parties without your prior consent unless required to do so by Law.

I have read and understood this information and I give my consent to Yeovil Ploughing Match Society to hold and use my personal data to provide me with information safely and efficiently.



YESTERDAY'S FARMING

This year's Show will be on the 16th and
17th August 2025
at Leaze Farm, Haselbury Plucknett

Admission Fees

Adults	Children
£10	U16's Free

**For more information and Entry
Forms, visit our website at
<https://yesterdaysfarming.co.uk/>**



ENTRIES CLOSE FRIDAY 19TH SEPTEMBER 2025

YEOVIL PLOUGHING SOCIETY

PLOUGHING ENTRY FORM

If you paid to enter last year's cancelled match, entry is free this year.

Class No: No of furrows on plough:

Make, Model & Year of Tractor:

Make, Model & Year of Plough:

Type of Plough: Hydraulic ☐ Trailer ☐ Reversible ☐ (Please tick)

Competitor's Name:

Address:

..... Post Code

Email Address:

If you supply an email address, we will send a copy of the results.

Mobile No:

If you are a YFC member, state which club:

Date of birth if a YFC member or under 16 years of age:

I have read and understand the data protection statement shown opposite and consent to the storage of my personal data.

I have read the rules and regulations and agree to observe and be bound by them.

I declare that my equipment is insured to plough at this ploughing match.

Signed: Date:

(or signature of parent if under 16 years of age)

Entries:

- Online at www.ypms.uk
- Email a signed copy to yeovilplough@outlook.com.
- By post to the Secretary – Corinne Raymont, Little Elm, Rimpton Yeovil, Somerset. BA22 8AP

Entry Fee is £10

Please tick if you paid last year, entry will be free ☐

Payment method: Bank Transfer ☐, Cheque Enclosed ☐, Cash on Day ☐
Cheques payable to Yeovil Ploughing Society

For bank transfer payment, please add name of ploughman as reference

Account Name: Yeovil Ploughing Society

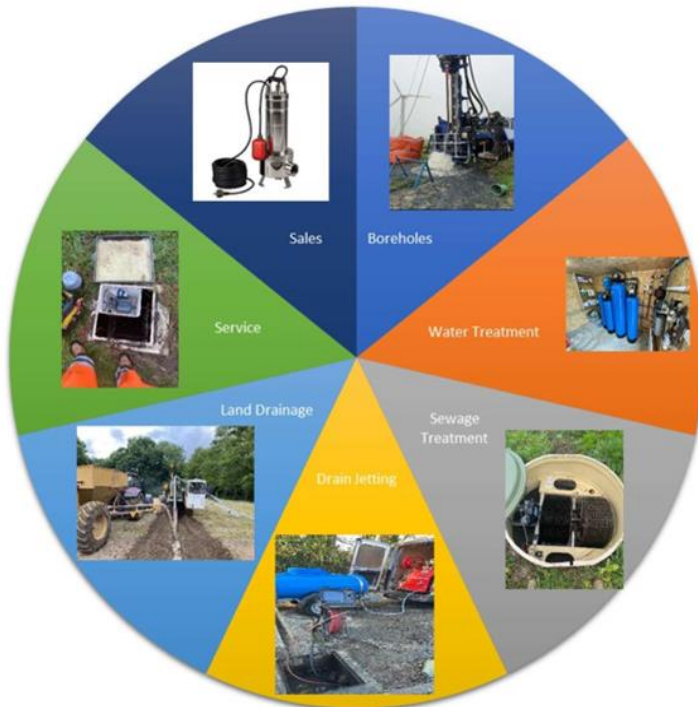
Sort Code: 40-47-28 Account No: 90897302

Steve Parker Services Ltd

www.steveparkerservices.co.uk

info@steveparkerservices.co.uk

01935 850393



Steve Parker Services

DRAINAGE & WATER SINCE 1976



 **POTTINGER**

WE SUPPLY PARTS FOR POTTINGER PLOUGHS

~ POTTINGER MAIN AGENT ~

We also supply parts for other brands
SERVO 2000 **SERVO 4000**



SERVO 2000



SERVO 4000



www.gsagri.co.uk
Tel. 01305 267151



Unit 1 Wardon Hill Business Park
Dorchester Dorset DT2 9PW



“Working Harder for the Countryside”

DMH TRACTORS & MACHINERY

YEOVIL, SOMERSET

MARK HOLLAND & SONS



-Choice of Vintage & Classic Tractors, Ploughs and Machinery-

TEL: MARK 07831347400 or DAN 07866232723

www.dmhtractors.co.uk



RECO

T. 01749 574035
GURNEY SLADE - RADSTOCK - BA3 4UU



FULL AGRICULTURAL JCB RANGE
WWW.RECOJCB.CO.UK



WE'VE GOT YOU COVERED



**BOOK YOUR
FREE JCB
HEALTH CHECK
TODAY**

WWW.RECOJCB.CO.UK
RECO



**YF REFER
A FRIEND!**

For every successful referral comes £100 bonus for your club!
A friend, family member or just someone you know who would be great at RECO!

CALL 01749 574035
PARTS ADVISOR
TECHNICIAN



LEADING AGRICULTURAL DEALERSHIP
NEW - USED - PARTS - SERVICE



FENDT



VALTRA



01749 812628 - 01258 837166 - 01722 716377
SOMERSET - DORSET - WILTSHIRE

WWW.REDLYNCHTRACTORS.CO.UK

VEHICLE & MACHINERY

SALES, SPARES & SERVICE AT YOUR JOHN DEERE LOCAL DEALER



SALES

- AGRICULTURE
- LAWN & GARDEN
- CONSTRUCTION
- GOLF & PROFESSIONAL TURF
- ISUZU D-MAX

SPARES

- REPLACEMENT PARTS
- OILS, GREASE & LUBRICANTS
- LICENSED MERCHANDISE
- 4X4 ACCESSORIES
- OVERNIGHT DELIVERY

SERVICE

- MOWER SERVICING
- 4X4 SERVICING
- DEDICATED AG & TURF TEAM
- BLADE SHARPENING
- TRAILER SERVICING



HUNT FOREST
GROUP



@huntforestgroup

Email us at info@huntforest.com
Visit us online at www.huntforest.com

Find your local Hunt Forest Group branch at

GREEN ORE

Green Ore, Wells, Somerset BA5 3ER
Tel: 01934 741166

DORCHESTER

Unit 51, Enterprise Park, Piddlehinton, Dorchester,
Dorset DT2 7UA
Tel: 01300 348881





P & R Hurt

EDUCATION & TRAINING

10 Babylon View, Pen Mill Trading Estate, Yeovil, Somerset. BA21 5HR

www.prhurt.com TEL: Yeovil 01935 – 475850/471835

CITY & GUILDS, EAL, & CompEx APPROVED

Training Courses for the Electrical Industry

Specialist training, workshop & assessment areas with modern practical assessment facilities



**Electrotechnical
Apprenticeships
School Leavers & Post 19**



Hazardous Area Comp'Ex' Courses

EXF Foundation Unit ~ Ex01 – Ex04 Gas & Vapours

Ex05 & Ex06 Dust Hazardous Areas

Ex07 & Ex08 Electrical Installations in Filling Stations

Ex09 & Ex10 Water Industry Explosive Atmosphere

City & Guilds & EAL Qualifications:

IET 18th Ed Wiring Reg's

BS7671:2018AMD2:2022

**EAL Level 3 Award in the Initial Verification and Certification of
Electrical Installations**

**EAL Level 3 Award in the Periodic Inspection, Testing and
Certification of Electrical Installations**

Special Note: Independent AM2 Test Centre

***We have a contracting division specialising in Hazardous Areas:
Oil & Gas Terminals, Filling Stations, Refuelling / Control Systems,
Commercial, Agricultural and Industrial Installations***



BUGLERS

www.buglers.co.uk



Supporting Farmers Throughout Dorset, Devon & Somerset

Tractors & Handlers | Machinery
Combines & Balers | Construction

Depot Locations: Gammons Hill - Axminster | Broadwindsor Road - Beaminster
Botany Bay - Blandford | Rimpton Road - Marston Magna

Head Office: Barrowfield, Broadwindsor Road, Beaminster DT8 3PP
T: 01308 862239 | www.buglers.co.uk



ADVISING GENERATIONS OF FARMERS SINCE 1843

Our Farm Agency team and professional services experts have a proven track record of success in selling farms, land, livestock and machinery across the West Country.

Want to know more? Contact us today.

**22 Princes Street | Yeovil | Somerset | BA20 1EQ
t: 01935 415300 | e: justin.lowe@gth.net**

GREENSLADE TAYLOR HUNT
www.gth.net



THE RED
BARN
FARM·SHOP

HINTON MUDFORD YEOVIL BA22 8BA



Just off the A359

A traditional farm shop on a working family farm. We sell a range of local produce and gifts.

A treasure trove of goodies.

Find us at the front of our Grade 11 listed red brick barn.



Opening Hours

Tuesday to Saturday 10:00am – 4:00pm

Sunday and Monday closed

www.redbarnfarmsop@gmail.com

Email: redbarnfarmshop@gmail.com

Tel: 01935 850994

Facebook

Instagram



Just a stroll away from:

CURIOUS COW
ANTIQUES & RECLAMATION



GRAHAM HOLLAND LTD

SOMERSET

www.grahamhollandtractors.com

01935 841307 | 07800 977797

info@hollandagriculturalservices.co.uk



YEovil HYDRAULICS

We've been supplying hydraulic parts, repairs and systems from our Somerset workshops and trade counters since the 1980s. Our dedicated and experienced team are on hand to support your needs and are here to assist you to ensure your equipment stays running.

Visit our Trade Counter today!

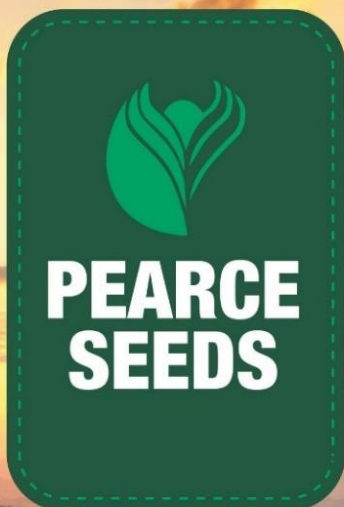
**14 Gazelle Road,
Lynx Trading Estate,
Yeovil, BA20 2PJ**



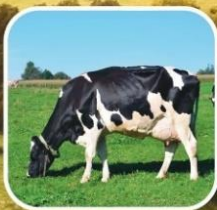
enquiries@yeovilhydraulics.co.uk

01935 472233





Specialists in your field



PEARCE GROUP OF COMPANIES

ROSEDOWN FARM • MARSTON ROAD • SHERBORNE • DORSET • DT9 4SX

T: 01935 811400 • E: INFO@PEARCESEEDS.CO.UK

WWW.PEARCESEEDS.CO.UK

P&A Pitcher and Associates

Established local Auctioneer and Valuers



FARM MACHINERY AUCTIONS

www.pitcherandassociates.co.uk

Tel: Richard Pitcher 07754 754629 Batstone Farm, Combe St. Nicholas, Chard, Somerset TA20 3HL



AGRICULTURAL Fuel, Lubricants, Oils & Greases



01761 452222



admin@fordfuels.co.uk



fordfuels.co.uk



Seed Processing Service

Trusted • Local • Responsive

Our high output mobile seed processing units and experienced operators screen and treat farm saved seed using gravity separation and rotary drum cleaners for a high quality sample.

- Operating three modern processing plants across the South West.
- Quality seed on farm, on time.



Tel: 01935 850750



www.evansandpearce.com



Supporting British
Manufacturing



Hurst Works : Blackdown : Beaminster : Dorset : DT8 3LE

Tel: (01460) 30661

Fax: (01460) 30173

P. H. HARDWILL Ltd ARE PROUD TO SUPPORT THE YEOVIL PLOUGHING MATCH



**P. H. HARDWILL Ltd have been Designing, Fabricating and
Erecting quality steel framed
Agricultural, Commercial and Industrial buildings and
providing Building and Groundwork Services
for over 55 years.**

**To discuss YOUR project, please call a member of the team or
visit our website**

www.phhardwill.co.uk



**Find us on:
facebook**

FOLLOW US ON



Structural Engineers

Steel Stockholders

Building Contractors

Registered in England No. 2684537 Directors: P. H. Hardwill (Managing), M. H. Hardwill, P. J. Hardwill (Secretary)

Symms Fabrication

agricultural and smallholding supplies

Manufacturers of Bulk Feed Bins

Indoor 3—10 Tonne

Outdoor 10—30 Tonne

Wide range of attachments including
buckets, grabs, forks, trailers etc,
all made onsite

Hydraulic hoses made while you wait

Steel stockholders and suppliers of plywood

Machinery repairs with fast turnaround times

www.symmsfabrication.co.uk

01935 851243

info@symmsfabrication.co.uk



WEST COKER GARAGE LTD

Fully equipped workshop catering for all your motoring needs at extremely competitive rates including Diagnostics, Tyres, Repairs, Air Con and MOTs on Cars, Vans and Motorcycles.

We now offer Servicing, Repairs and Tyres on Motorcycles, all at competitive rates.

Forecourt with Super Unleaded, E10 and Diesel sales

Village store and off licence

Opening hours 8am - 5pm Monday to Friday and 8am - 1pm Saturday



High Street, West Coker, Yeovil BA22 9AN
Telephone: 01935 862735, Email: westcoker@hotmail.co.uk

WE'RE ON YOUR DOORSTEP

Having a local office means we're accessible, whether you need to make changes to your policy or make a claim.

We offer insurance products and financial planning services including:

- Car
- Business
- Pensions and Investments
- Home
- Commercial Vehicle
- Life and Critical Illness cover
- Farm
- Property Owners
- Business Protection

For more information, contact Yeovil_agency@nfumutual.co.uk on 01935 475 661 | 46 Hendford, Yeovil, Somerset, BA20 1UW



The National Farmers Union Mutual Insurance Society Limited (No. 111982).



DUFFIELDS

TRUSTED ANIMAL FEEDS



Duffields (South West)
Babylon View, Pen Mill Trading Estate
Yeovil, Somerset BA21 5HR
sales@duffieldssouthwest.co.uk

01935 432299
www.duffields.co.uk

DUFFIELDS.
SUPPORTING
FARMERS FOR
OVER 125 YEARS



**Supporting farmers
and the countryside**

**Game, Conservation and Wildflowers
Since 1988**

- Exclusive Seed Options
- Products for SFI & Stewardship
- Game Cover Crops
- Conservation Grasses
- Hedging Plants
- Establishment Guidance
- Supplementary Feed

www.brightseeds.co.uk

01722 744494 • sales@brightseeds.co.uk

Dean Lane Farm, Fovant, Salisbury, Wiltshire, SP3 5LQ



HAWKINS



HAWKINS AGRI LTD. BRIDGWATER. 01278 444366



For Sales, Service & Parts Across The South West.

Visit Our Website!!!!

www.hawkins-agri.co.uk

A photograph of a barn interior. A small dog with brown and white fur is lying on a large pile of yellow hay. To the left of the dog is a large sack made of coarse burlap fabric. In the background, there is a wooden wall and a black metal cage or structure. A green rectangular box with the text 'Symonds & Sampson' is in the top right corner.

**Symonds
& Sampson**

Looking for property advice?
We understand what's important to all
the members of your family

Yeovil 01935 423526

**A NEW ERA FOR
STRAIGHTFORWARD
AND DEPENDABLE TRACTORS**



C&O TRACTORS

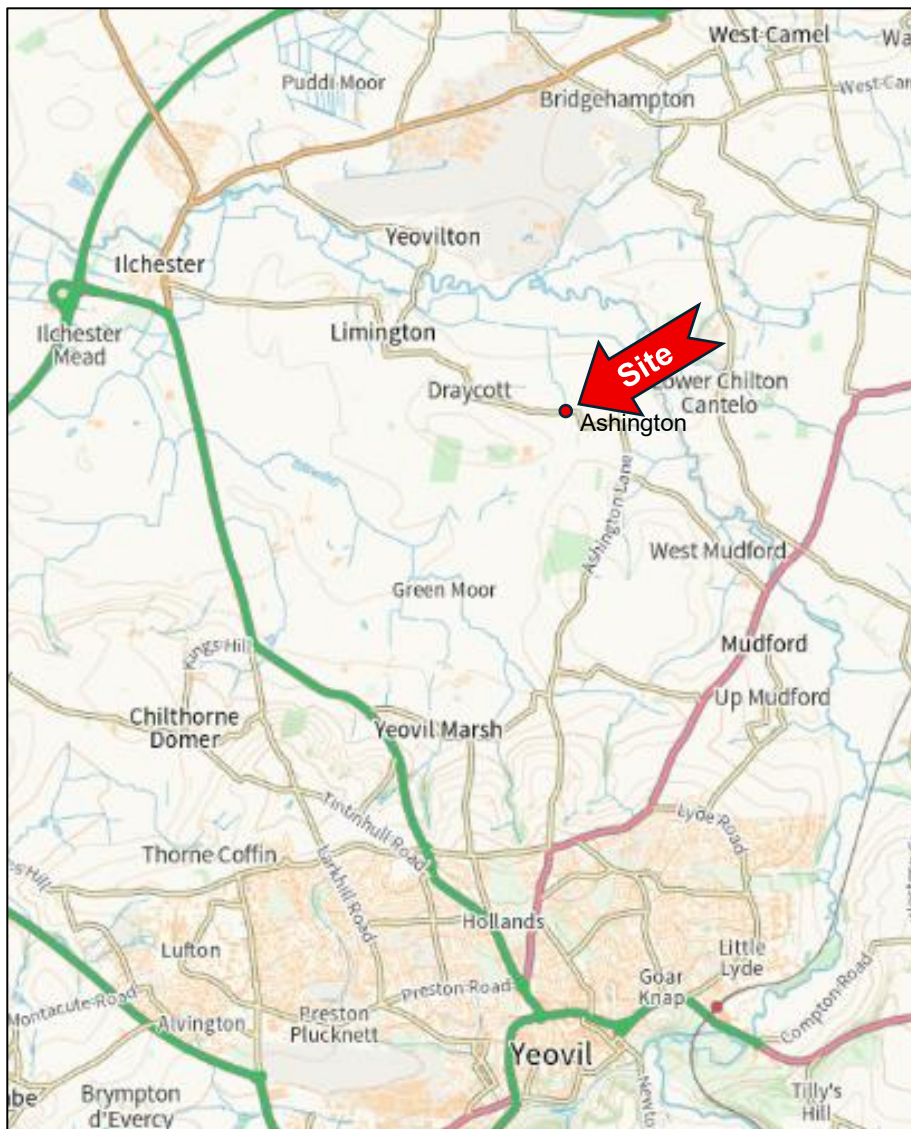
Yeabridge Farm
South Petherton
Somerset
TA13 5LW

01460 241 286
candotracors.com



MASSEY FERGUSON





The site is at Ashington and will be signed from Ilchester, and from the A359 at Mudford.

Nearest Post Code: BA22 8ED
Grid Reference: 50°59'27.14"N 2°37'56.26"W
What3words: ///roses.cornfield.presumes
CMR 2025 ©